



Yehans Surveillance & Security Systems



CONTACT US ON

Website: www.yehansinternational.com/

Email: sales@yehansinternational.com

Telephone: +233 302 51 25 25

WhasApp: +233 244 31 90 79

Location/Address: GD-185 -7157

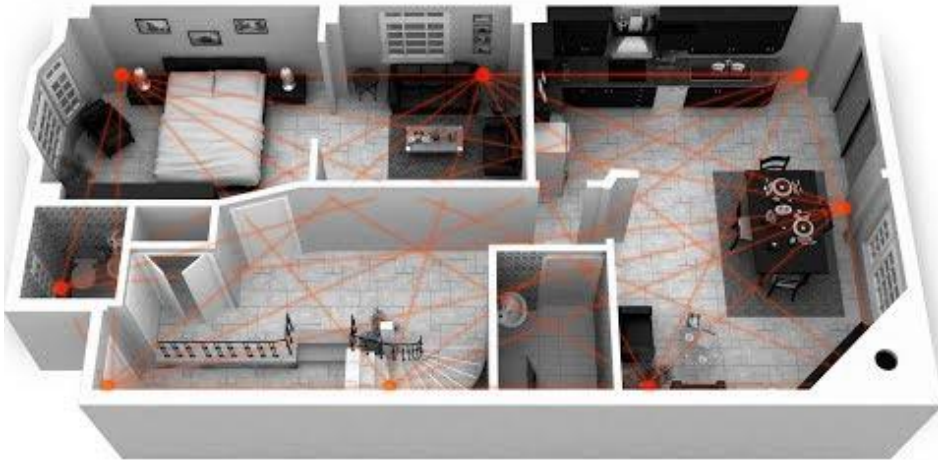
75 Boundary Road East Legon - Accra

INTRUSION SOLUTIONS

laser perimeter alarming



Yehans Surveillance & Security Systems



Uncomparable Security !



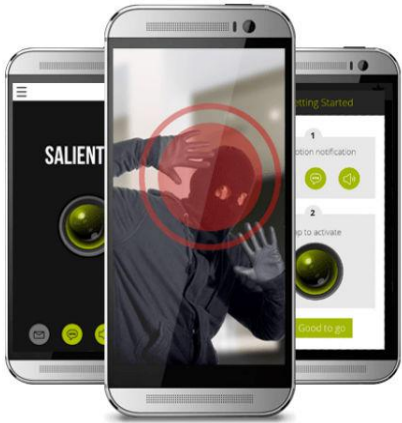
Yehans Surveillance & Security Systems

Laser perimeter alarming

INTRUSION SOLUTIONS

Laser Perimeter Alarming

1



Yehans Surveillance systems designs and deploys a comprehensive range of high performance intrusion solutions- including integrated systems, detectors and wireless systems- for commercial, industrial, institutional and residential applications.

Our intrusion Solutions covers wired and wireless laser perimeter alarm systems, video surveillance systems and access controlled systems (passwords, personal identification numbers (PINs), biometric scans and physical or electronic keys etc.

These are all based on well known and world acclaimed brands like Risco, Rokonet and Gardtec.

Deploying the laser perimeter alarming systems

Here is how it works:

On the principle that again you are alerted against any element of surprise long before they will attempt to break in. And the alarm go off only when a human not an animal crosses the perimeter. Unlike electric fencing, or razor coils or other forms of perimeter protection, with our high-tech laser alarming systems it is practically impossible to avoid detection.

Features include:

- Video verification on your smartphone when the alarm is triggered.
- The system can be armed or disarmed from any part of the world using your smartphone.
- Professional 106dBA Outdoor sounders with 36hr backup battery or 80 minutes alarm.



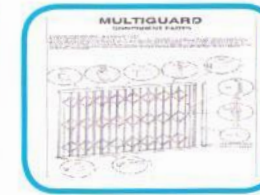
6

It also buys you time to prepare for an escape or alternative security when you come under attack. In residential security, physical barriers are, in my opinion, one of the most effective form of crime prevention. Physical barriers such as gates, railings, fencing, window guards, and security screen door.

When it comes to front doors, it is estimated that over 70% of all break-ins occur through the front door, (2010 FBI Crime Statistics), and in over 80% of these, the door frame fails when kicked in or some other battering ram device is used.

There are a number of steps a home owner can take to beef up the security of the door, but the best solution is to provide a barrier to opening. That is having a Yehans multiguard burglar proofing grill before the opening or a quality security door in place.

This form of barrier protection is known as target hardening- suggesting the home with the most barriers is the worst target for the burglar- and they should move on.



- Collapsible burglar proofing
- Security Doors
- Roller Shutters
- Automated Gates
- Automated Garage doors
- Balustrades



Video Surveillance (CCTV)

IR Beams

Motion detectors

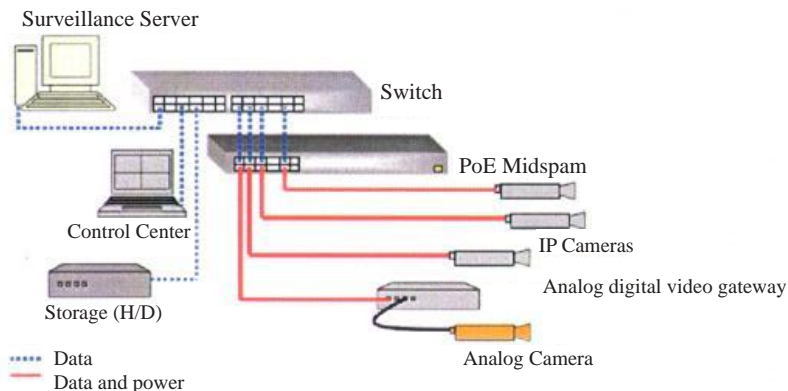
Laser Perimeter Protection

3



Active Laser Perimeter Detection System

Our unique video surveillance architecture



Choosing the right surveillance system for your home

4

"Proactive" Vs. "Reactive" Systems

The first thing I advise home owners to consider when looking at a surveillance system for residential premises is to decide whether they want a reactive or a proactive system.

Now there is a huge difference between the two. A reactive system is one that simply records on events, so if the camera detects an event trigger such as a motion, a movement within the camera's field of view or if a door has been opened, if the system is hardwired to a front door then the cameras will start recording. Now most surveillance systems have that capability.

A proactive system is one that proactively contacts you if predefined events occurred during scheduled hours or 24/7. So basically I'll give you an example of the scenario of how a proactive system works. Let's say you and the family pack your bags and are away for two weeks, no one is there looking after the premises. You can set up a proactive system to notify you as soon as let's say human activity is detected. So somebody enters, jumps the back fence and they are in the back garden, the system would instantly notify you to your mobile phone, as long as you have got a 3G or 4G connection.

The live view instantly appears on the phone, you get the notification, you swipe it and it launches and you can start viewing what's going on. The other thing that will enable you to do is to communicate to whoever is within the camera's field of view as long as they are within the vicinity of the camera then you can communicate with them.

So there are two things that are required for a proactive system. Firstly, the security cameras in that system need to be VoIP enabled, meaning that each camera needs

internal software that will enable it to initiate a phone call, to say your mobile phone, if a specific event or alarm trigger has been activated. A VoIP camera will also have microphone and speakers so that you can engage in two-way communication with anyone located near the camera using your mobile phone.

The second thing needed is software in the camera that can accurately detect human movement while ignoring other unimportant movements such as wind-blown trees, rain and so on. As a human moves into the camera's field of view, it generates an alarm trigger.

This particular software is installed inside the camera. The camera can then respond to the alarm by sending an alarm notification to your mobile phone and from there you can instantly access the camera's live view and see if there is a potential problem.

A proactive system can be set up using just two outdoor cameras, one at the front and one at the rear yard. Which if equipped with the right technologies and set up correctly would protect most homes from unwanted intruders. The power of a proactive system is that they put you in a position of being able to respond to a situation before it gets out of hand, before breaking in occurs or before vandalism occurs.

That is the beauty of proactive systems and that is a lot much better scenario than being able to positively identify somebody after the theft has occurred or after the damage had already been done. I am sure you will agree. So proactive systems do require more

Figure 3: Installing network video system using Power over Ethernet Midspan

advanced technologies so they are more expensive but the return on investment is invaluable. After detecting the movement the VoIP enabled camera announces a warning message while also initiating a phone call to a video monitoring centre.

The operator at the monitoring center who received the call notification also received instant access to the camera's live view. This enables the operator to verify that there is in fact an unwanted intruder in the car yard, the operator can then contact the local police confirming they have a visual of a potential threat, then the police can immediately dispatch a patrol vehicle to the car yard within minutes and the perpetrator will then be apprehended. Most importantly the crime is prevented before it could occur. You can only get this kind of result with a proactive surveillance system.



PHYSICAL BARRIER SOLUTION

Collapsible Burglar Proof - Security Doors - Roller Shutters - Auto Garage And Gates

Physical barriers are still recommended when it comes to crime prevention. Law enforcement professionals and organizations have always been proponents of "stop" crime before it ever happens by always looking protected. That should not come as a surprise as we live in a society that generally accepts "barriers" in just about anything we do.

Ever notice, people will stand in line at a bank, amusement park, etc. and stay within the maze of coloured ropes or chain that keeps us in order? Physical barriers are a good thing - like guardrails that keep us from careening over the edge of a cliff - preventing a disaster before it ever happens!

LIGHTSYS™ 2

Intruder Alarm System

LightSYS™ 2 is the new generation of the successful lightSYS™ 2 series, designed for small commercial and residential markets and renowned for its wide range of installation and communication options. LightSYS™ 2 is the only hybrid security system that offers video verification and smart phone app control as well as your choice of wired, 2-way wireless or RISCO Bus detectors.



LightSYS™ 2 can be controlled and monitored using RISCO's smartphone app iRISCO, which transforms it into a state-of-the-art tool for home and small business owners. LightSYS™ 2 supports wired, two-way wireless and RISCO BUS detectors in any combination: RISCO BUS installation saves time and money, as detectors are installed in series on the system and can be remotely configured and diagnosed. Communication flexibility includes IP, GSM, GPRS, PSTN, STU adaptor and long range radio which can all be installed within the main housing and gives the installer the flexibility to choose the best communication channel for the job.

- Video verification with IP Cameras integrated via RISCO Cloud fully wireless visual verification with PIR cameras
- Wired, 2-way wireless or RISCO Bus detector in any combination
- SmartPad tablet keypads for unique installer experience add elegance to any installation
- Choice of stylish and affordable touchscreen keypads
- Flexible communication from within the main housing: Plug-in, GSM/GPRS and IP modules, onboard
- PSTN and optional long range radio programmable from LightSYS™ 2 selectable EOL zone resistance and remote zone resistance measurement ideal for multisite projects with the SynopSYS Integrated & Building Management TM platform

